



Ketchikan Marine Industry Council

"Identify and Promote Ketchikan's Marine Enterprise"

www.ketchikanmarineindustry.com



The Arctic Starts in Ketchikan

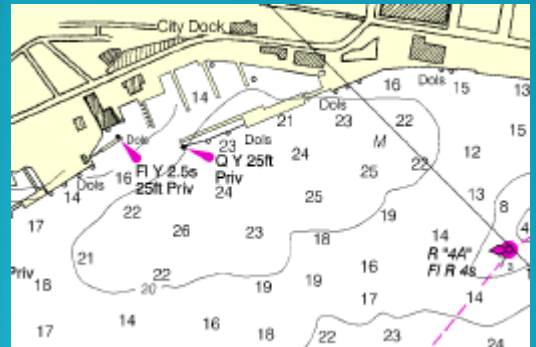
City of Ketchikan Harbors

Owner: City of Ketchikan Ports & Harbors Department

Contact: Steve Corporon, Harbormaster

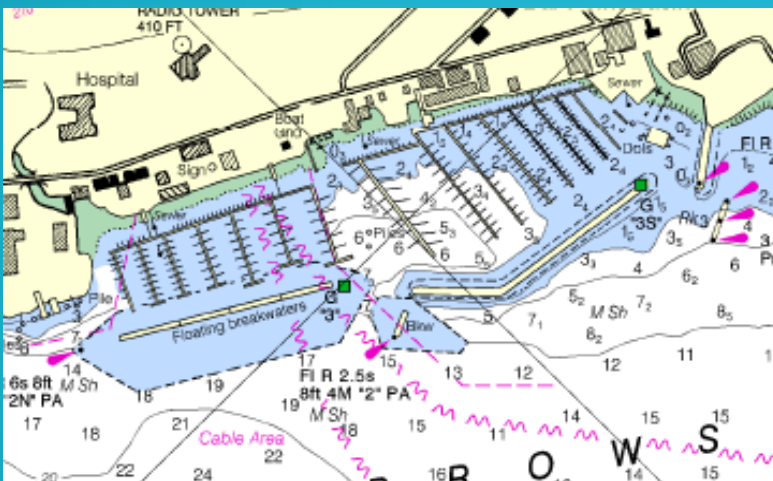
Email: stevec1@city.ketchikan.ak.us

Phone: 907-228-5632



The City of Ketchikan's Ports and Harbors include harbors suitable for vessels up to 90' in length, with depth to -100 mllw.

Ketchikan's harbors are conveniently located near downtown areas, and feature a wide variety of infrastructure and amenities suitable for meeting the needs of vessels and crewmembers alike.



Harbor	Depth	Vessel Size
City Float (Casey Moran Harbor)	40' to 100' MLLW	Up to 90'
Bar Harbor	8' to 60' MLLW	Up to 80'
Thomas Basin	5' to 40' MLLW	Up to 60'

www.ketchikanmarineindustry.com

Ketchikan Marine Industry Council:

An Industry-Led Initiative



City of Ketchikan Harbors

Industrial Services at Site:

- Potable water, limited electricity (varies by facility)
- Restrooms, garbage dumpsters, waste oil tanks, pump-out station, tidal grids (varies by facility)
- Proximity to Alaska Ship & Drydock (a Vigor Industrial shipyard and marine industrial service facility), Ketchikan Medical Center (medical service hub for region), Ketchikan International Airport, and the 212 businesses comprising Ketchikan's highly developed, highly competent marine industry sector
- Proximity to bunkering opportunities at Ketchikan's 3 fueling stations



Add Value: *The Ketchikan Business Advantage*

- Strategic location 690 miles north of Seattle, 932 miles south of Anchorage
- Rapid access to North Pacific shipping lanes
- Reliable, rapid access to overlapping Puget Sound supply chain
- Proximity to Alaska Ship & Drydock: A Vigor Industrial shipyard and marine industrial service facility
- 212 resident marine industry sector businesses, ready to respond to private sector demand
- Reliable barge service makes Ketchikan competitive with peer communities in the Pacific Northwest
- Proximity to Ketchikan International Airport, and Ketchikan General Hospital (regional medical hub)
- Tax rates lower than Puget Sound and other regional competitors
- Pro-industry, pro-development community