



# Ketchikan Marine Industry Council

"Identify and Promote Ketchikan's Marine Enterprise"

[www.ketchikanmarineindustry.com](http://www.ketchikanmarineindustry.com)



## The Arctic Starts in Ketchikan

# City of Ketchikan Cruise Ship Berths

**Owner:** City of Ketchikan Ports & Harbors Department

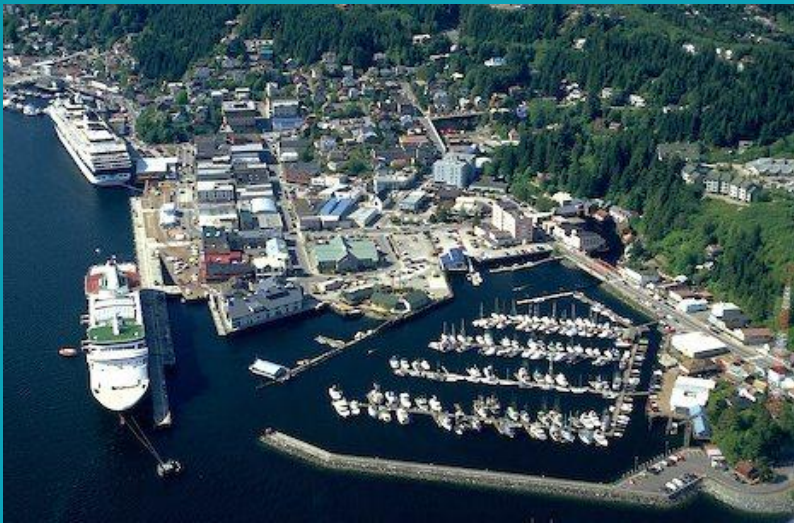
**Contact:** Steve Corporon, Harbormaster

**Email:** [stevec1@city.ketchikan.ak.us](mailto:stevec1@city.ketchikan.ak.us)

**Phone:** 907-228-5632

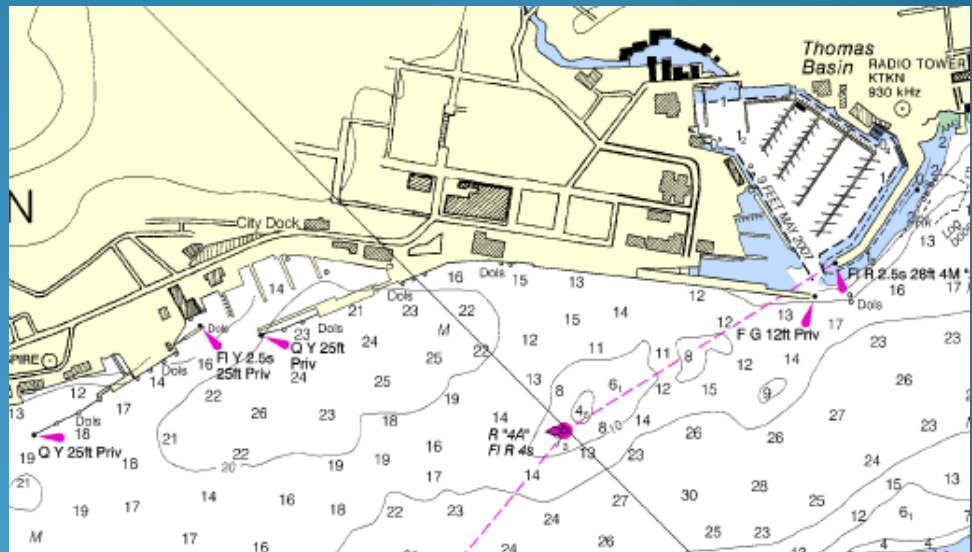
**Rate Listing:**

<http://www.city.ketchikan.ak.us/departments/ports/documents/PortRateWebPage.DOC>



*The City of Ketchikan's Ports & Harbors include four deep-water panamax-sized berths, with mllw depth ranging from -40' to -100'. The berths are used by cruise ships from June to September, and are available October to May to accommodate large vessels seeking ice-free winter moorage.*

Each berth has an adjacent float. Daly Float is 200 feet long and is located on the inboard side of Berth I. Ryus Float is 150 feet long and is located at the north end of Berth II. Berth III has a 400 foot long float on the northern, inboard side of the berth. Berth IV has two floats. The first is 120 feet long and is on the southern, inboard side of the berth and the second is 70 feet long and is located on the northern, inboard side of the berth.



berth  
northern, inboard side of the  
long and is located on the  
and the second is 70 feet

[www.ketchikanmarineindustry.com](http://www.ketchikanmarineindustry.com)

**Ketchikan Marine Industry Council:**

*An Industry-Led Initiative*

