



Ketchikan Marine Industry Council

"Identify and Promote Ketchikan's Marine Enterprise"

www.ketchikanmarineindustry.com



The Arctic Starts in Ketchikan

Ketchikan Shipyard

Owner: Alaska Industrial Development and Export Authority (AIDEA)

Operator: Alaska Ship & Drydock: A Vigor Industrial Group Company

Contact: Doug Ward

Email: doug.ward@akship.com

Phone: 907-225-7199



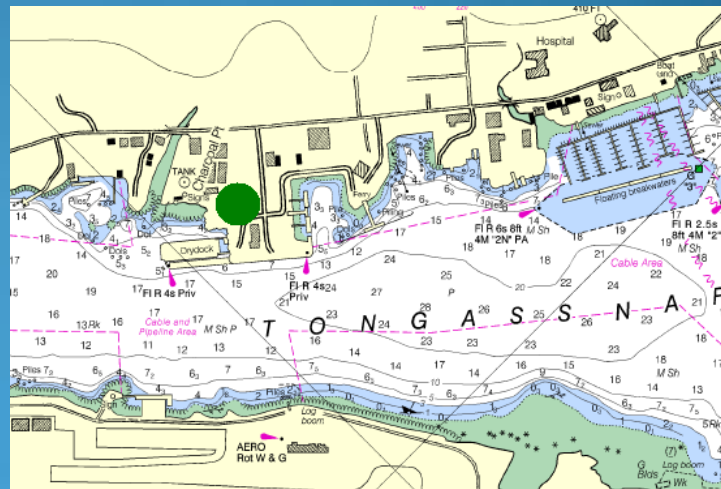
Ketchikan's Shipyard offers a comprehensive array of shipbuilding, repair, maintenance, and marine industrial services well-suited to challenging Arctic and Alaskan conditions.

The shipyard is operated by Alaska Ship & Drydock, under ownership of Vigor Industrial – the largest provider of shipbuilding, repair, and industrial services in the Pacific Northwest.

Noteworthy projects include the M/V Susitna – a variable draft, icebreaking catamaran designed for expeditionary warfare, and widely hailed as one of most complex surface vessels ever built.

Specifications:

- 70,000 sf indoor assembly hall and production center
- 1,400 of deep-water pier space at -35 mllw
- Drydock 1: L 460', W 110' between wing walls, 10,000 LT
- Drydock 2: L 225', W 85' between wing walls, 2,500 LT – part of a land-level transfer system accessing a 25,500 sf ship assembly and repair berth, and a 33,000 sf ship assembly and production hall
- 16.5 acre facility
- 3 mobile cranes, 25 to 150 ton
- Covered fabrication area: 61,774 sf, with 70,000 sf assembly hall
- Road accessible via Ketchikan's Tongass Highway



www.ketchikanmarineindustry.com

Ketchikan Marine Industry Council:

An Industry-Led Initiative



KETCHIKAN SHIPYARD

Marine Vessel Newbuild --

Comprehensive – All phases: design and engineering, purchase materials and outfitting items, fabrication process, assembly process, erection process, outfitting (electrical, mechanical, etc.), systems integration and testing, final painting, roll out and launch, warranty follow-up as needed.

Marine Vessel Repair and Overhaul --

Comprehensive services, including: Pre-work Inspections and Testing, estimate-bid-contract development, tagging and marking, removals, inspections, cleaning and painting, repair (shipboard or shop), reinstallation, tests and/or trials, training (if required), dock and/or sea trials, completion surveys.



Add Value: *The Ketchikan Business Advantage*

- Strategic location 690 miles north of Seattle, 932 miles south of Anchorage
- Rapid access to North Pacific shipping lanes
- Reliable, rapid access to overlapping Puget Sound supply chain
- Proximity to Alaska Ship & Drydock: A Vigor Industrial shipyard and marine industrial service facility
- 212 resident marine industry sector businesses , ready to respond to private sector demand
- Reliable barge service makes Ketchikan competitive with peer communities in the Pacific Northwest
- Proximity to Ketchikan International Airport, and Ketchikan General Hospital (regional medical hub)
- Tax rates lower than Puget Sound and other regional competitors
- Pro-industry, pro-development community